

## NOTES ON SOME SLUGS FROM ALGIERS.

By WALTER E. COLLINGE, F.Z.S.,

Assistant-Lecturer and Demonstrator in Zoology and Comparative Anatomy, Mason College, Birmingham.

Read June 14th, 1895.

## PLATE XXIII.

THE slugs here described are some very kindly forwarded to me by Mr. W. Moss, of Ashton-under-Lyne. Amongst them are two new species of *Amalia* and a single example of *Arion*, which I am terming *A. hortensis*, Fér., although it is open to doubt if it really be that species.

1. *AMALIA ATER*, n.sp.

Animal: Head, mantle, and dorsum black, sides of body sepia-coloured or dirty grey; portion beneath the mantle white; mantle oval, with groove as in *A. gagates*, only more pointed in front (Fig. 2); foot-fringe deep black; foot-sole white, excepting in the anterior region, where it is similar to the sides of the body; rugæ large. Length (in alcohol) 37 mm.

Shell (Figs. 3a and 3b) almost circular, with triangular indentation anteriorly. Length 2.5, breadth 2 mm.

Externally *Amalia ater* is not unlike a very dark example of *A. robici*, Simr., but the form of the generative organs is very different.

The free oviduct (Fig. 4, *ov'*) is a long wide tube, becoming narrower towards the external opening. The sperm-duct (Fig. 4, *sp.d.*) shows a slight constriction at its commencement and again in the centre. Its form is best seen in Fig. 5. The vas deferens passes off as a narrow tube. There is a long receptacular duct (Fig. 4, *r.d.*) and a large globose receptaculum seminis.

2. *AMALIA MACULATA*, n.sp.

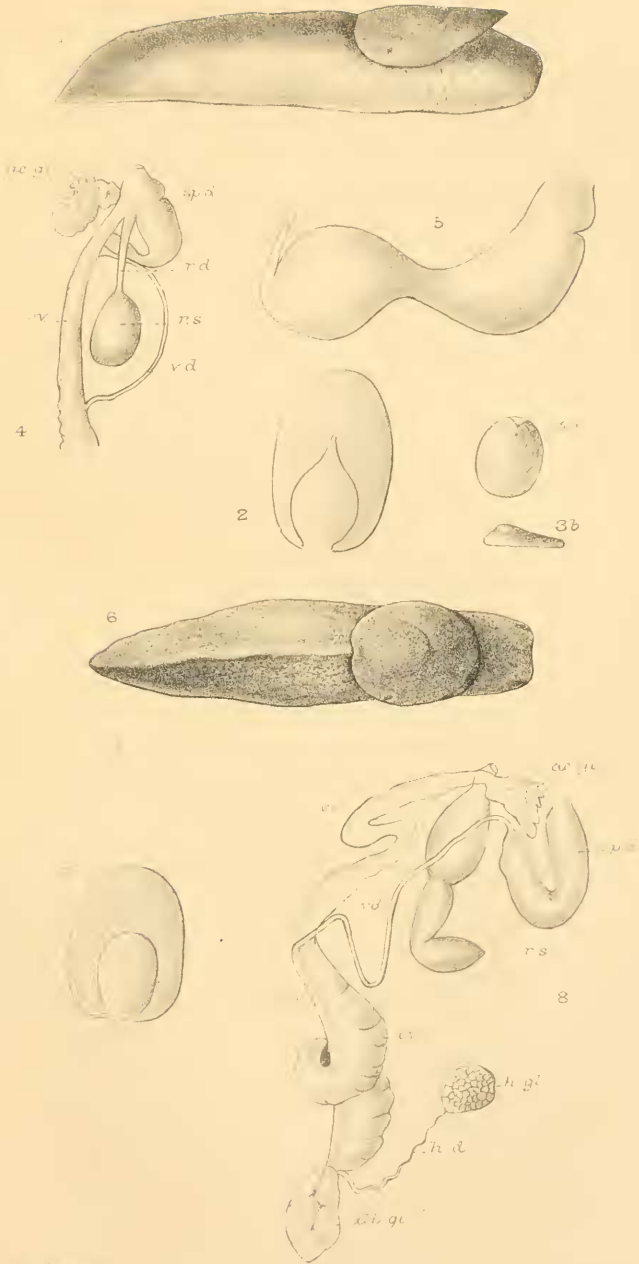
Animal (Fig. 6): Ground colour, dirty grey dotted with yellow, posterior portion of body nearly black, with median yellow line running along the keel. Groove on mantle oval-shaped; foot-fringe and foot-sole yellowish brown. Length (in alcohol) 39 mm.

Shell oval, thick. Length 2.5, breadth 2 mm.

The chief points in the anatomy upon which I base the specific distinctness of this species are: the peculiar form of the receptaculum seminis (Fig. 8, *r.s.*), in which the duct seems to be absent, the gland consisting of three dilated sacs; the long, looped, free, oviduct (Fig. 8, *ov'*) and the spiral twist in the common duct (Fig. 8).

3. *ELISOLIMAX LONGICAUDA*, Fischer, 1882.

There is a single example of this slug which may be referred to the variety *maculata*, Fisch., and which is probably identical with the var.



W. E. ...  
M. Woodward, art.

...